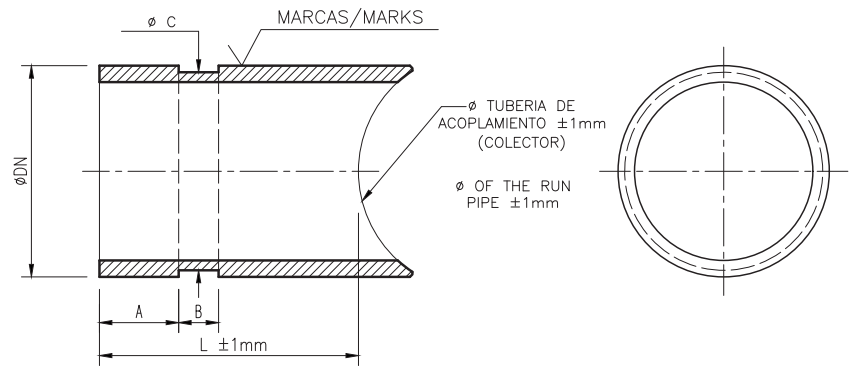




Grooved **OUTLETS**



Ø NOMINAL (mm)	Ø PIPE (mm)	A ± 0,76mm	B ± 0,76mm	C Groove Diameter (mm)	L (mm)	Ø RUN PIPE
1" (DN-25)	33,7±0,33	15,88	7,14	30,23	76 Standard Length, other lengths under demand	From 1 1/4" (DN 32) to 1 2" (300)
1 1/4" (DN-32)	42,4±0,41	15,88	7,14	38,99		
1 1/2" (DN-40)	48,3±0,48	15,88	7,14	45,09		
2" (DN-50)	60,3±0,61	15,88	7,14	57,15		
2 1/2" (DN-50)	76,1±0,76	15,88	7,14	72,26		



*We can fabricate non standard lengths and Ø nominal up to 12" under demand